

KULKARNI TRANSPOWER PVT. LTD.



MANUFACTURER OF PUFLEX GR COUPLINGS

Great People

Great Company

Great Brand

Great Future



www.ktppl.com

KULKARNI TRANSPOWER PVT. LTD.

PUFLEX GR COUPLINGS

HUB DETAILS:

PUFLEX GR hubs are available in Aluminium, Cast Iron and Steel Material.

PUFLEX GR sizes from 19 to 28 are made from Aluminium Alloy & Steel material.

PUFLEX GR sizes from 38 to 90 are made from Cast Iron & Steel Material.

PUFLEX GR hubs are manufactured with high precision machining.

The jaws are machined with concave shape and entry chamfer for easy assembly.

The concave shape in jaws of hub and the convex shape on the polyurethane spider allows for better angular, parallel and axial misalignment.

These hubs are available in un-bored, pilot bored, finish bore & key-ways, and with different styles of clamping arrangements as per customer requirements.

SPIDER DETAILS:

PUFLEX GR spiders are manufactured from high grade polyurethane.

PUFLEX GR are available in three different hardness as 64 Shore A, 92 Shore A, and 98 Shore A. This different hardness's are made available to suit different applications.

The details are as below.

Spider Type	Colour	Material	Temperature Range ° C		Available sizes	Application
			Normal working	Maximum		
64 Shore A	Green	Polyurethane	from -50 to + 80	from -60 to + 120	GR 19 to 90	More Vibration
92 Shore A	Yellow	Polyurethane	from -40 to + 90	from -50 to + 120	GR 19 to 90	Medium torque,
98 Shore A	Red	Polyurethane	from -30 to + 90	from -40 to + 120	GR 19 to 90	More torque,

Applications:

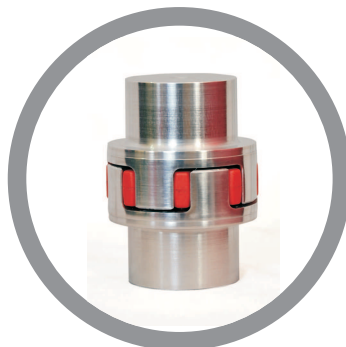
● Pumps

● Cooling Towers

● Conveyers

● Rolling Mills

● Hyd. Power Packs



● Cranes, Hoist

● Gear Box & Motors

● Textile Machines

● Special Purpose Machines

● And many more.

Office : R-Cube, Rahul Park, NH-4, Warje, Pune - 411 058. Maharashtra India

Mob.: 91 0 - 9764444391 / 9422007155

Website : www.ktppl.com E-mail : sales@ktppl.com



PUFLEX GR COUPLINGS

PUFLEX GR couplings are the three piece assembly of 2 no. Aluminium Alloy Cast Iron or Steel hubs and one Special Grade Polyurethane Spider. These three pieces are co-axially assembled to complete the PUFLEX GR coupling. After assembly these couplings becomes sufficient flexible, positive motion and power transmitting fail safe coupling elements. Due to polyurethane spider, both the metallic hubs are separated from each other to avoid there physical contact. This helps to avoid the electrical and frequency isolation of both the connected driver and driven elements.

Applications:

Pumps, Cooling Towers, Conveyers, Rolling Mills, Hyd. Power Packs

Crane, Hoist, Gear Box & Motors, Textile Machine, Special Purpose Machine And many more

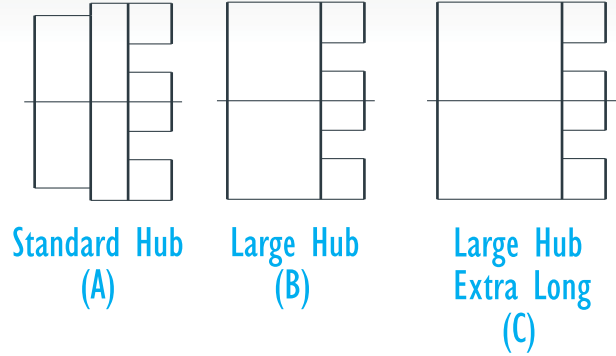
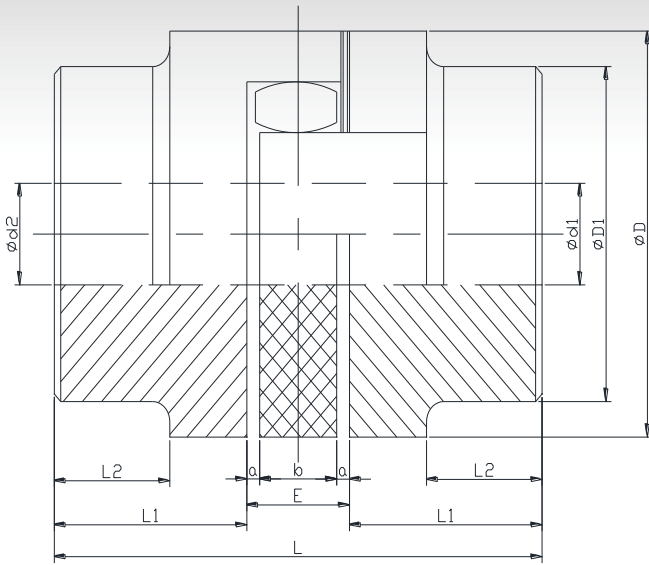
Benefits:

Flexible, No maintenance, No Lubrication, Failsafe, Uniform & Positive motion and power transmission, Electrical and frequency isolation, Available in Unbored, pilot bore and finish bore and key-ways.

OUR GOAL
Customer satisfaction



PUFLEX GR COUPLINGS



Dimensional details

Size PUFlex GR	Bore Sizes mm			Overall Dimensions										
	Minimum	Maximum		Outer Dia. D	Hub Dia. D1	Spider I.D. d3	Total Length Std. / Large Hub L	Total Length Extra Long Hub L	Hub Length Std. L1	Hub Length Extra Long L1	Hub Length L2	Space Bet ^m Hubs E	Spider Width b	Isolation Gap a
	Std. Hub d1	Large Hub d2												
19	6	19	24	41	32	18	66	90	25	37	20	16	12	2.0
24	9	24	28	56	40	27	78	118	30	50	24	18	14	2.0
28	10	28	38	66	48	30	90	140	35	60	28	20	15	2.5
38	12	38	48	80	66	38	114	164	45	70	37	24	18	3.0
42	14	42	55	95	75	46	126	176	50	75	40	26	20	3.0
48	15	48	62	105	85	51	140	188	56	80	45	28	21	3.5
55	20	55	74	120	98	60	160	210	65	90	52	30	22	4.0
65	22	65	80	135	115	68	185	235	75	100	61	35	26	4.5
75	30	75	95	160	135	80	210	260	85	110	69	40	30	5.0
90	40	90	110	200	160	100	245	295	100	125	81	45	34	5.5

Technical Data

Size PUFlex GR	Rated Torque Nm			Maximum RPM	Max. Misalignment			Dynamic Torsional Stiffness 10 ³ Nm/rad			Weight Kg	Moment of Inertia Kgm ²
	98 Sh-A	92 Sh-A	64 Sh-D		Axial mm	Radial mm	Angular Deg	98 Sh-A	92 Sh-A	64 Sh-D		
19	17	10	21	16700	1.2	0.2	1.2	2.92	1.28	5.35	0.51	0.000121
24	60	35	75	12100	1.4	0.22	0.9	9.93	4.86	15.11	1.10	0.000466
28	160	95	200	10100	1.5	0.25	0.9	26.77	10.90	27.52	1.80	0.00107
38	325	190	405	8300	1.8	0.28	1.0	48.57	21.05	70.15	2.50	0.00171
42	450	265	560	7000	2.0	0.32	1.0	54.50	23.74	79.86	3.90	0.00476
48	525	310	655	6350	2.1	0.36	1.1	65.29	36.70	95.51	5.30	0.00805
55	685	410	825	5500	2.2	0.38	1.1	94.97	50.72	107.92	7.90	0.01564
65	940	625	1175	4950	2.6	0.42	1.2	129.51	97.13	151.09	11.90	0.03071
75	1920	1280	2400	4150	3.0	0.48	1.2	197.50	113.32	248.22	18.60	0.06706
90	3600	2400	4500	3300	3.4	0.5	1.2	312.20	190.09	674.52	33.60	0.22139